



# /CLASSIC K5 BLAZER

VELOCITY™



# THE VELOCITY DIFFERENCE

---

Velocity builds modern vehicles that pay homage to the past. Each Velocity vehicle reimagines a classic style complimented by the confort and reliability we expect from a modern driving experience. The end result- the Velocity Signature Series.

Each step of the build process is completed in-house by our team of expert craftsmen and every Velocity Signature Series vehicle is built with the utmost attention to detail as expected by our team and our clients.





- ▲ Unmatched 16 week production timeline with real-time build updates provided
- ▲ Precision crafted components fabricated in our 135,000 sq. ft. production facility
- ▲ Over 130 trained experts focused on designing, fabricating, and assembling your Signature Series vehicle
- ▲ In-house tuning guarantees each vehicle meets or exceeds performance requirements
- ▲ Innovative research and development team with decades of experience
- ▲ Four downdraft-style professional paint booths provide a lustrous finish and hardened durability
- ▲ Precision crafted parts designed by engineers with a passion for classic vehicles



# ICONIC AMERICAN HERITAGE MEETS MODERN DESIGN.

Take one look at a Velocity K5 Blazer and you'll find a design that stays true to the vintage look of the original but offers dozens of custom details that set it apart from any other restoration.

Beautifully reimagined, Velocity's K5 Blazer comes in two tiers, the Signature Series and the Heritage Series.

**MADE MODERN. KEPT TIMELESS.**





# MODELS

---

## SIGNATURE SERIES

Velocity's Signature Classic K5 Blazer offers unmatched quality and value, including the most desirable features.

Starting at \$339,900



## HERITAGE SERIES

The Heritage Series K5 Blazer, Velocity's top trim offering offers bespoke interior and exterior upgrades.

Starting at \$399,900





## SIGNATURE SERIES

**STARTING AT \$339,900**

Designed to excite each of your senses, and built to last, we've put the modern touches on the Chevrolet K5 Blazer that you'd expect in a modern vehicle. .

- ▲ Custom vehicle paint job using high-quality BASF Glasurit paint
- ▲ JW Speaker brand LED headlights
- ▲ BFGoodrich All-Terrain T/A Tires 305/70R18
- ▲ 18" MT Bullet Wheels
- ▲ 5-Point roll cage with matching safari top
- ▲ Chrome Accessories



# SIGNATURE INTERIOR

Once you take a seat in the Velocity Signature K5 Blazer, you won't believe the transformation. In a nod to classic General Motors vehicles, every K5 Blazer offers color-matched upholstery, dash pad, and a custom headliner.

The touchscreen Bluetooth stereo with Apple CarPlay works with Focal speakers and subwoofer to provide a premium sound experience, just in case you get tired of listening to the LT1. Vintage Air climate control and an IDIDIT adjustable steering column help every driver get comfortable, no matter what the weather is.

- ▲ Power Windows
- ▲ Custom Dakota Digital Gauge Cluster
- ▲ Tilt Steering Column
- ▲ Lockable Center Console
- ▲ Matching All-Weather Floor Mats
- ▲ Bluetooth Stereo
- ▲ Vintage Air AC System
- ▲ Focal Audio Sound System







## HERITAGE SERIES

STARTING AT \$399,900

The Heritage Series is Velocity's top offering exterior upgrades such as two-tone paint, beltline trim, center console, color matched carpet, and more.

- ▲ Two-tone custom paint job with cut and polish, using BASF Glasurit paint
- ▲ Chrome beltline trim with wood grain
- ▲ Custom 18" painted steel wheels
- ▲ Velocity exterior billet accessories
- ▲ Matching painted bumpers and roll cage
- ▲ Painted firewall
- ▲ "Chevrolet" Tailgate Trim Panel with woodgrain insert and upper trim molding
- ▲ Lower side trim moldings with woodgrain insert



# HERITAGE INTERIOR

The interior of the K5 Heritage Series has been completely reimagined by the Velocity team. In-house designed center console and door panels come standard, along with color-matched carpet, Italian leather, and Velocity's billet interior components.

- ▲ Velocity Exclusive Italian Leather Interior including custom center console and door cards
- ▲ Color-matched carpet
- ▲ Interior billet components
- ▲ Premium Focal Audio
- ▲ Sparc wrapped billet steering wheel
- ▲ Backup camera







# THE FOUNDATION OF PERFORMANCE

## SPECIFICATIONS

Gen V 6.2L GM LT1 V8

460 Horsepower

10-Speed Automatic Overdrive Transmission

0 to 60 in 5.1 Seconds

Curb Weight - 4650 lbs  
*Standard options with 5pt cage*

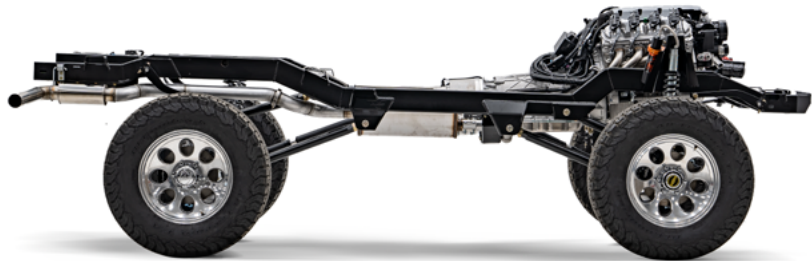
Length - 178"

Width - 80"  
*Standard options at the mirrors*

Height - 80"  
*Standard options on 35" tires*

## FEATURES

- ▲ Exclusive Frame built by Roadster Shop
- ▲ Fuel Tank
- ▲ Performance Exhaust
- ▲ Wilwood Disc Brakes
- ▲ 5-Point Roll Cage
- ▲ Sway Bars
- ▲ Fox Coilovers

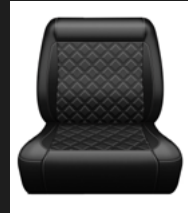


# SIGNATURE INTERIOR COLORS

*\*Additional colors available but may result in increased build time.*

## VELOCITY EXCLUSIVE MARINE GRADE VINYL - STANDARD

Beautiful, comfortable, and durable marine grade vinyl comes standard in each Velocity Signature K5 Blazer



WHITE

ARABIAN

WALNUT

HICKORY

BLACK

**VELOCITY EXCLUSIVE LEATHER**

---

Rich, flat grain leather for a premium look.



LIVE OAK



SHORELINE





# EXTERIOR UPGRADES



## LOWER BODY SIDE MOLDING \$6,500

The beltline trim is a molding that goes along the sides and rear on the Blazer. It was an original Blazer option that we offer to add to the classic aesthetic.



## CENTER TWO TONE W/ TRIM \$14,000

Add to the iconic look of your Blazer with a two-tone paint job. Offered as an original option in 1972, lower body side molding and chrome beltline trim is also included.



## LOWER TWO TONE W/ BELTLINE TRIM \$14,000

The beltline trim is a stainless molding that goes along the sides of Blazer. This option is offered with lower two-tone paint..



## HARD TOP \$28,000

Our hard tops are meticulously built by hand in our metal shop. A hard top provides the most protection for your vehicle from outside elements. Available in white or color-matched to body. Includes headliner & sound silencing material.



## WET SAND AND POLISH \$5,500

The wet sand and polish is a process that enhances the appearance of the exterior of the Blazer. This process eliminates particles that might have been left behind and it smooths the surface to allow for a deep glossy look.

## BILLET EXTERIOR APPEARANCE PACKAGE \$5,500

Give your build the premium touch with Classic K5 Blazer parts from Velocity

### INCLUDES

---

#### DOOR HANDLES



#### SIDE MIRRORS





# INTERIOR UPGRADES



## VENTILATED SEATS

**\$2,900**

Ventilated seats are a great feature to have on a hot summer day. Add even more modern luxury to your Blazer with this option.

*\*Requires perforated seats*



## LEATHER UPGRADE

**\$4,500**

The leather is an upgrade from the marine quality vinyl. It provides an upgraded fit and finish with a luxurious feel. Take your Blazer to the next level by upgrading to premium leather.



## SPINNYBECK WOVEN LEATHER

**\$10,000**

Premium Spinnbeck Woven Leather creates depth and pattern to your build by weaving thin strips of leather together. This unique look truly meshes classic and modern.

Only offered on Heritage Series builds and may increase production time.



## HEATED SEATS

**\$2,200**

This feature adds the comfort of heated seats to the front seats of your Bronco. Whether you want to warm up on a cool day or relax your back after a long day on the links, the heated seat upgrade is a must-have.



## BACKUP CAMERA

**\$2,500**

Our backup camera includes a rearview mirror with a digital display that is activated when the vehicle is put into reverse.



BILLET INTERIOR APPEARANCE PACKAGE

\$3,500

Give your build the premium touch with Classic K5 Blazer parts from Velocity.

INCLUDES

---

INNER DOOR HANDLE



WINDOW CRANKS



DOORLOCK PULLS



SHIFT KNOBS



HEADLIGHT KNOB



CLIMATE CONTROL KNOBS



# UNMATCHED PRODUCTION TIMELINE

---

At Velocity we provide a known 16-week production timeline along with a set price for your Velocity Signature Series classic Chevrolet K5 Blazer. With all work completed in house, we can provide a vastly different experience compared to an average restoration with long lead times and hidden costs.

The production process is broken into one week segments that correspond to a specific portion of the restoration. Dedicated technicians in each step ensure weekly completion and greater quality control. Combined with a rich inventory and our ability to complete all stages of production in-house, we control the timelines and completion dates of our vehicle builds like no one else.



### **DRAW SCHEDULE**

Your Customer Success Team member will work with you to establish a draw schedule. The draw schedule can consist of up to five payments.

- ▲ Contract & \$25,000 Deposit  
*Guarantees production slot*
- ▲ Paint/Body Draw
- ▲ Production Draw  
*Due prior to production start*
- ▲ Chassis/Mechanical Draw
- ▲ Test & Tune Final Draw

### **PRODUCTION LINE**

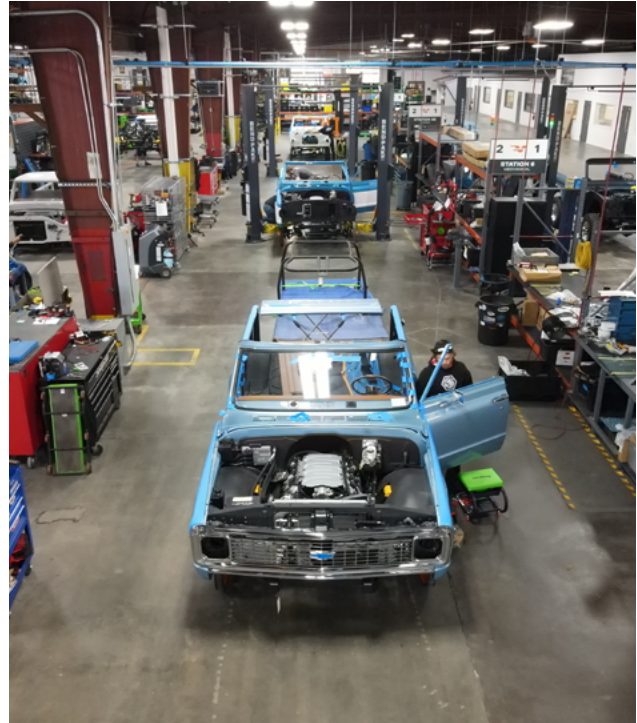
The customer experience provided by Velocity is truly second to none. We want you to be as involved in the process as you would like to be.

During the 16-week build timeline, a member of our Customer Success Team will work alongside you to ensure that you have the best experience possible. This includes regular updates sent directly to you from the production line throughout each station of the build process.

### **DEALER PAPERWORK AND SHIPPING**

Once the final draw payment is made we will begin all of the final paperwork. Your dedicated Customer Success Team member will guide you through the process every step of the way.

Once the Blazer is finished and the final paperwork is completed, your Customer Success Team member works with you to coordinate shipping and delivery. We work with you and for you making sure that your new vehicle arrives safely and swiftly.





## ST1

### BODY MOCKUP

Each vehicle starts as a bare Velocity Exclusive Blazer frame that is powder coated to ensure long-lasting durability. The Bronco body is then set on top of the frame to "mockup" the vehicle.



## ST2

### EXHAUST & ROLL CAGE

We fabricate each roll cage to fit seamlessly to your vehicle. A custom exhaust system is also crafted to ensure your vehicle sounds as good as it looks.



## ST3

### BODY PREP

Your vehicle body is then stripped to bare metal and our body shop technicians correct and refine all panel gaps. Final sanding and bodywork preparation is done before painting.

## ST5B

### CHASSIS

All-new drivetrain components are assembled and mounted to the chassis before the painted body is lowered and mounted.



## ST6

### MECHANICAL

Our technicians connect all electrical and mechanical parts of the vehicle. Your vehicle's beating heart, the 6.2L GM LT1 V8 engine, is fired up for the first time.







## ST4

### PAINT

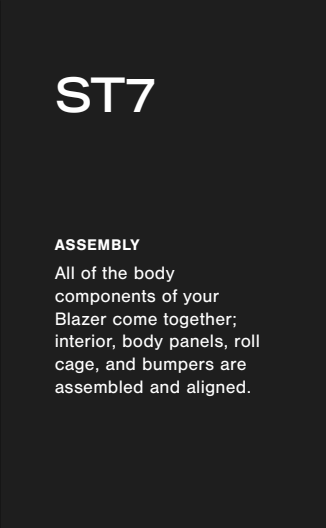
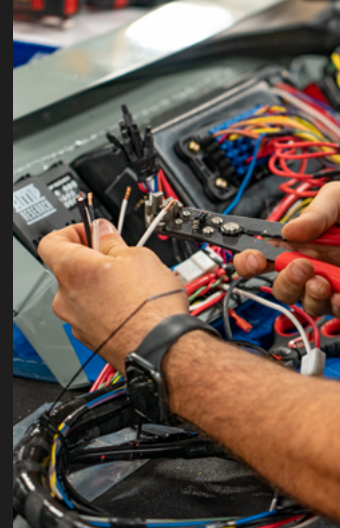
Custom Glasurit paint is sprayed on the body tub and panels of your vehicle. Velocity utilizes two down-draft paint booths in our facility to ensure the highest standard of paint.



## ST5A

### ELECTRICAL

Electrical systems are prepared and installed throughout your vehicle's body. All new wiring is integrated with a modern ECU (Electronic Control Unit) & TCU (Transmission Control Unit).



## ST7

### ASSEMBLY

All of the body components of your Blazer come together; interior, body panels, roll cage, and bumpers are assembled and aligned.



## ST8

### TEST & TUNE

Our process consists of 500+ miles driven and a custom tune on our in-house dyno to ensure an unparalleled driving experience.



## ST9

### QC

Our classic vehicle experts diligently and thoroughly inspect each Blazer ensuring our top of the industry standards are met.







## CONTACT

---

 (850) 466-1810

 [VELOCITYRESTORATIONS.COM](https://www.velocityrestorations.com)

 [INFO@VELOCITYRESTORATIONS.COM](mailto:info@velocityrestorations.com)

 15 E QUINTETTE RD, CANTONMENT, FL 32533

     [@VELOCITYRESTORATIONS](https://www.instagram.com/velocityrestorations)

